

PART OF SECTION 10, T.6N., R.1E., S.L.B. & M.
 SPURLOCK SUBDIVISION PLAT 1

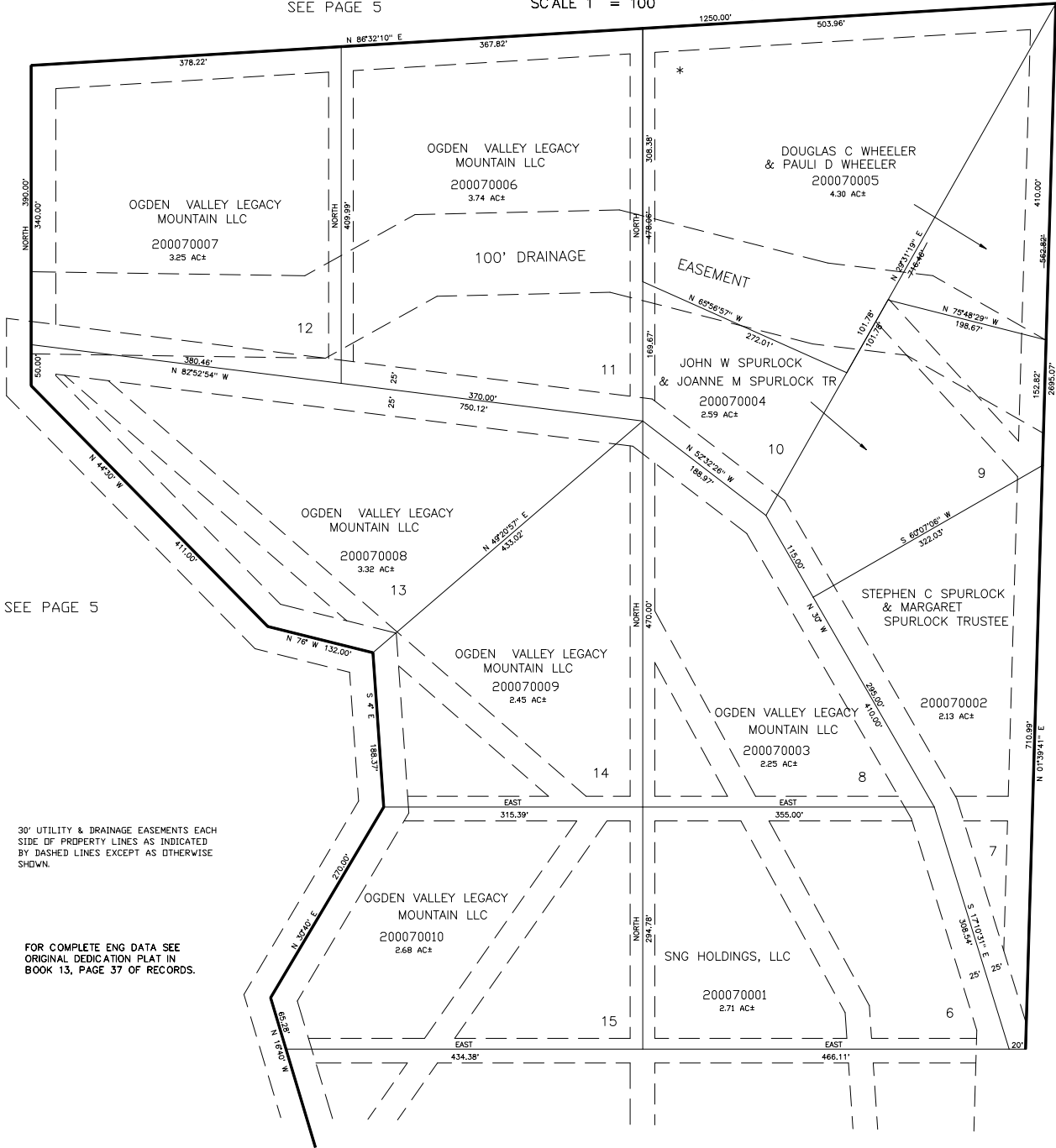
PLAT 1

LOTS 6 - 15
 IN WEBER COUNTY
 SCALE 1" = 100'

TAXING UNIT: 317

SEE PAGE 5

* UTILITY EASEMENT ON LOT 10
 VACATED 14-OCT-1998
 BK 1962 PG 2724 E#1581019



SEE PAGE 5

SEE PAGE 46

30' UTILITY & DRAINAGE EASEMENTS EACH SIDE OF PROPERTY LINES AS INDICATED BY DASHED LINES EXCEPT AS OTHERWISE SHOWN.

FOR COMPLETE ENG DATA SEE ORIGINAL DEDICATION PLAT IN BOOK 13, PAGE 37 OF RECORDS.

SEE PAGE 6